

VT7EE or VT7EES - 066 - 045 - 1 R 00 - A 1 0 - 00 \*

**Series**

**VT7EE** series - ISO 3019-2  
mounting flange 250 B4HW

**VT7EES** series- SAE E 4 bolts  
Mounting flange J744c

**Cam ring for "P1" & "P2"**

Volumetric displacement cm<sup>3</sup>/rev (in<sup>3</sup>/rev)

042 = 132.2 (8.07)	057 = 183.2 (11.18)
045 = 142.5 (8.70)	062 = 196.6 (12.0)
050 = 158.5 (9.67)	066 = 213.0 (13.0)
052 = 163.8 (10.0)	072 = 227.1 (13.86)
054 = 170.9 (10.43)	085 = 268.7 (16.40)

**Type of shaft VT7EE**

2 - keyed G45N(ISO/R775 -G38M)

**Type of shaft VT7EES**

- 1 - keyed (SAE CC)
- 3 - splined (SAE CC)
- 4 - splined (SAE D & E)
- 5 - splined (SAE D & E)

**Modifications**

**Mounting W/connection variables**

P1 & P2= 1-1/2" S=4"		
	VT7EES	VT7EE-VT7EES
Type	UNC	METRIC
code	00	M0

**Coupling adaptor**

- 0 - none
- 2 - SAE B
- 3 - SAE BB

**Seal class**

- 1 - S1 (for mineral oil)
- 4 - S4 (for fire resistant fluids)
- 5 - S5 (for mineral oil and fire resistant fluids)

**Design letter**

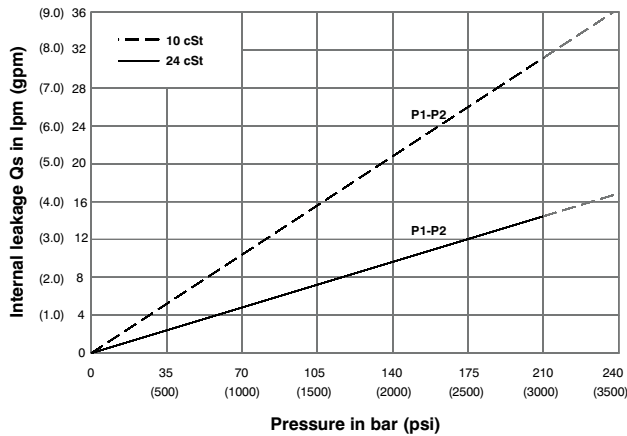
**Porting combination** (see page BM-1-5)  
00 - standard

**Direction of rotation (view on shaft end)**

- R - clockwise
- L - counter-clockwise

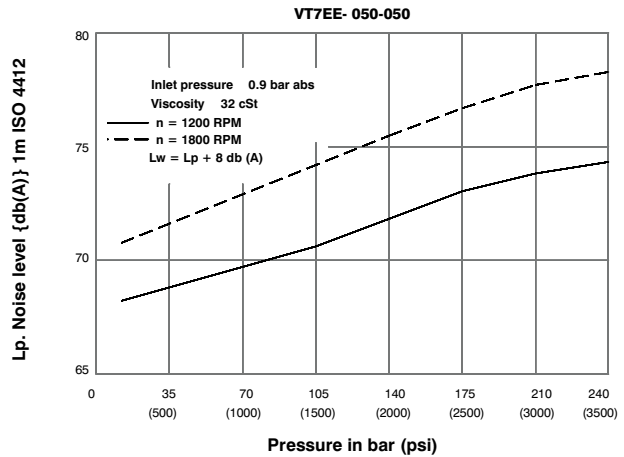
VP  
DT

**INTERNAL LEAKAGE (TYPICAL)**



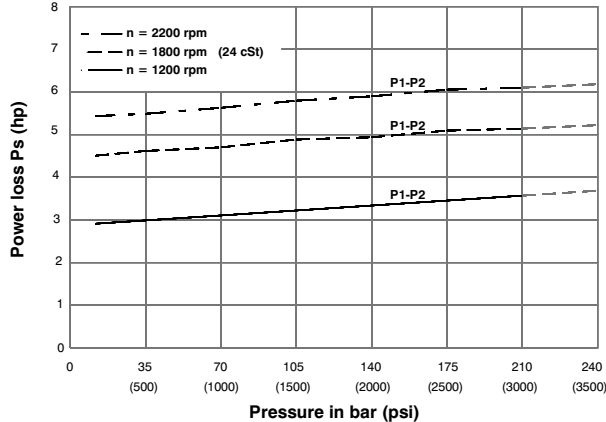
Do not operate pump more than 5 seconds at any speed or viscosity if internal leakage is more than 50% of theoretical flow. Total leakage is the sum of each section loss at its operating conditions.

**NOISE LEVEL (TYPICAL)**



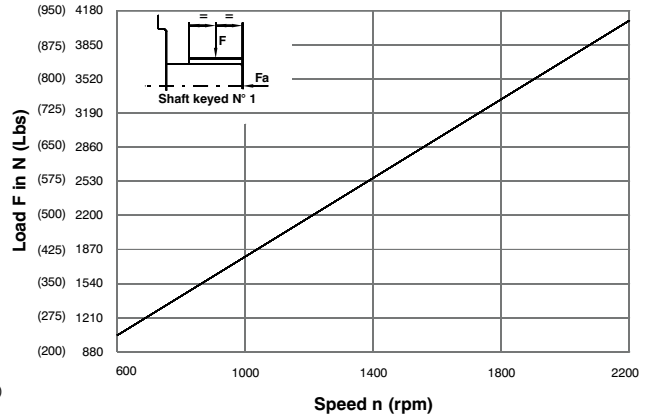
Double pump noise level is given with each section discharging at the pressure noted on the curve.

**HYDROMECHANICAL POWER LOSS (TYPICAL)**



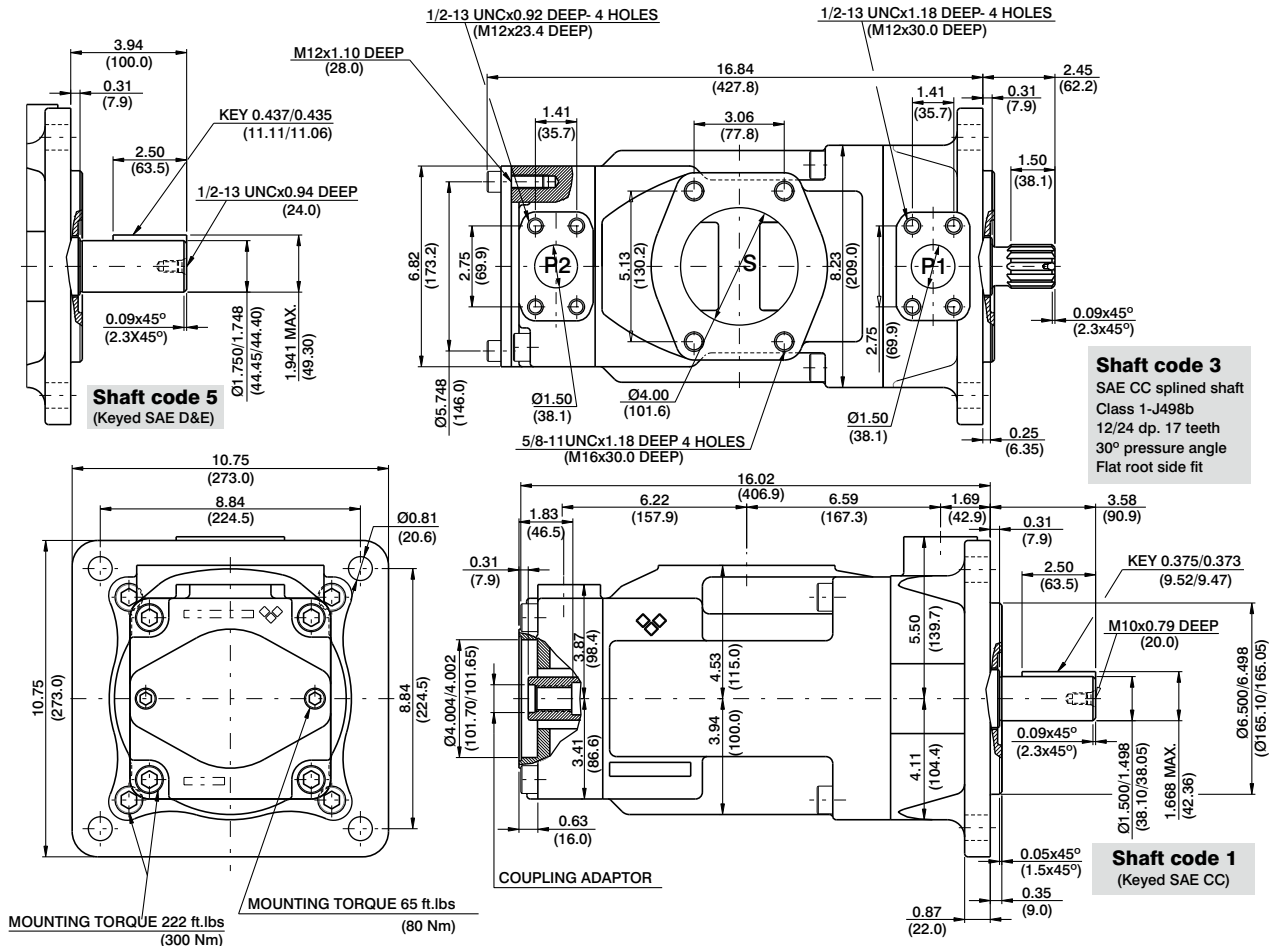
Total hydromechanical power loss is the sum of each section at its operating conditions.

**PERMISSIBLE RADIAL LOAD**

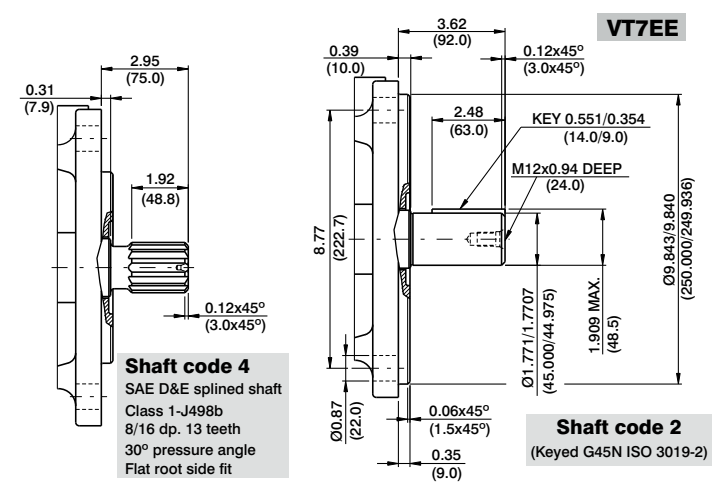


Maximum axial load permissible Fa = 2000 N (449 Lbs)

# HIGH PERFORMANCE VANE PUMP VT7EE / VT7EES



VP  
DT



Shaft torque limits in <sup>3</sup> /rev x psi (ml/rev x bar)			
Shaft	Vi x p Max.	Copling	Vi x p Max.
1	80053 (90380)	SAE-B	18246 (20600)
2	101506 (114600)	SAE-BB	28937 (32670)
3	112312 (126800)		
4	112312 (126800)		
5	104818 (110840)		

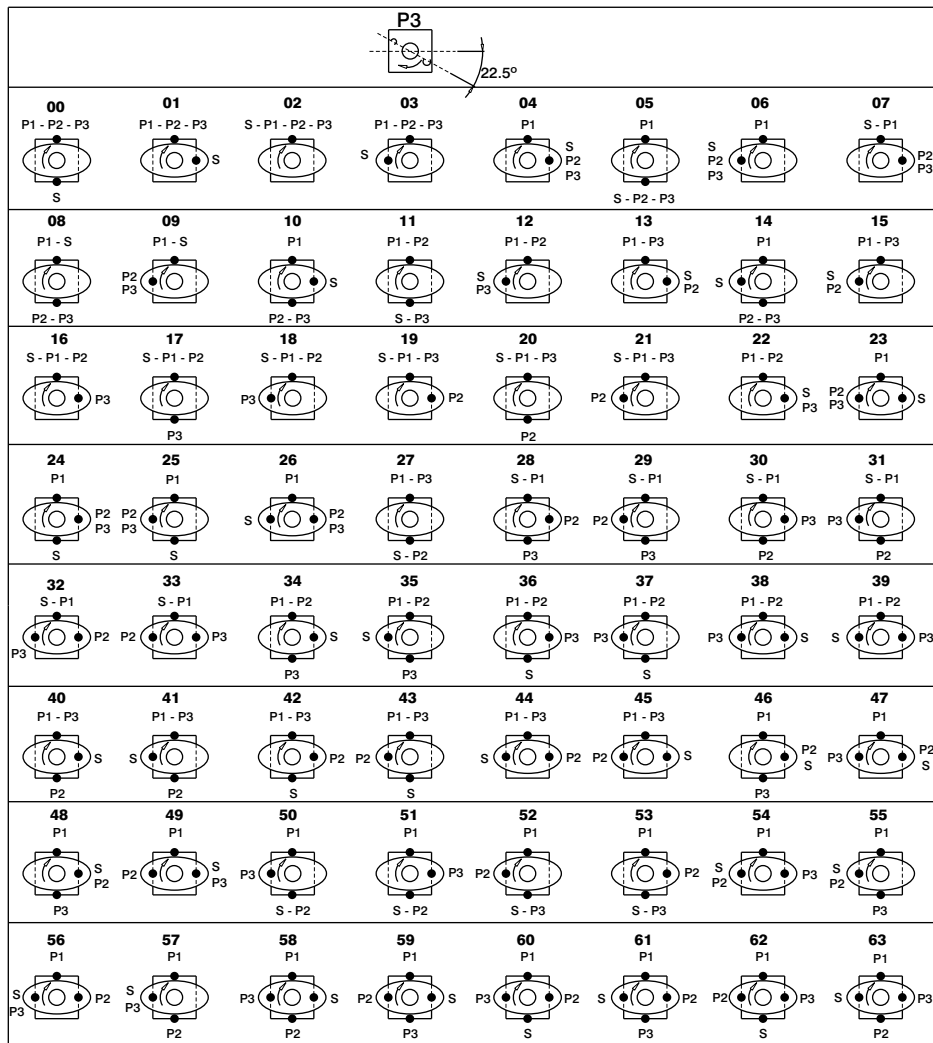
Code	Coupling adaptor
0	Without coupling
2	SAE B -13 teeth -pitch 16/32 Major dia (min) 0.875 (22.225) Minor dia (min.) 0.753 (19.126)
3	SAE BB -15 teeth -pitch 16/32 Major dia (min) 1.00 (25.4) Minor dia (min.) 0.877 (22.275)

## OPERATING CHARACTERISTICS - TYPICAL (24 cST) (Input power p (KW) for one cartridge only)

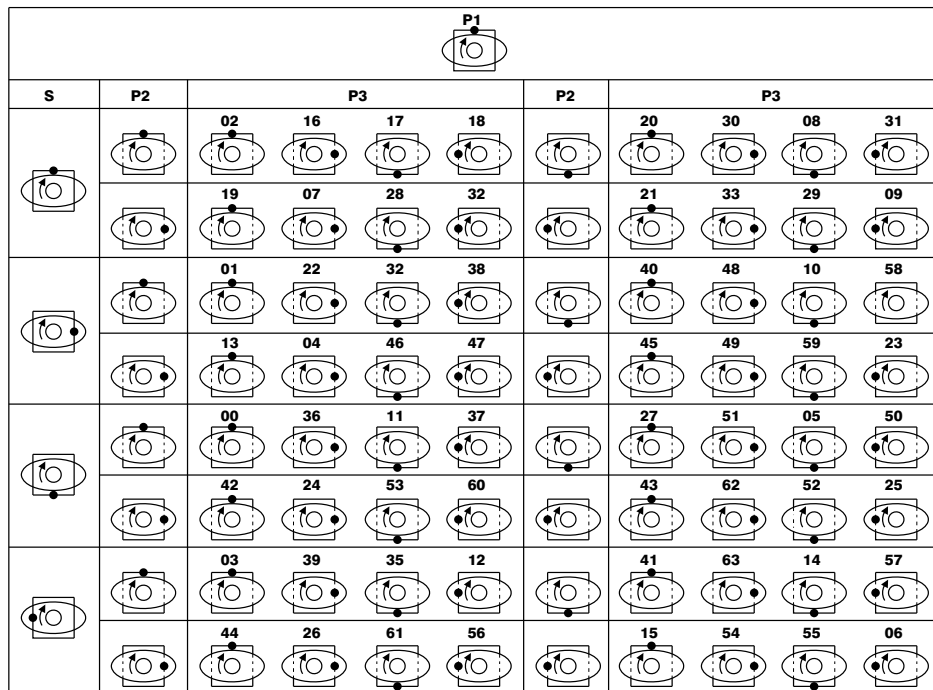
Pressure port	Series	Volumetric Displacement Vp		Flow q & n = 1800 rpm						Input power p & n = 1800 rpm					
		in <sup>3</sup> /rev	cm <sup>3</sup> /rev	p = 0 bar (0 psi)	p = 140 bar (2000 psi)	p = 240 bar (3500 psi)	p = 7 bar (100 psi)	p = 140 bar (2000 psi)	p = 240 bar (3500 psi)	hp	kw	hp	kw	hp	kw
P1 & P2	042	8.07	132.2	62.92	237.8	60.37	228.2	58.52	221.2	8.09	6.03	78.44	58.49	133.80	99.77
	045	8.70	142.5	67.72	255.9	65.17	246.3	63.32	239.3	8.37	6.24	84.04	62.66	143.60	107.08
	050	9.67	158.5	75.38	284.9	72.83	275.3	70.98	268.3	8.82	6.58	92.97	69.32	159.24	118.75
	052	10.00	163.8	78.37	296.2	75.82	286.6	73.97	279.6	8.99	6.70	96.47	71.94	165.36	123.31
	054	10.43	170.9	81.27	307.2	78.72	297.6	76.87	290.6	9.17	6.84	99.75	74.38	177.46	132.33
	057	11.18	183.2	87.12	329.3	84.57	319.7	82.72	312.7	9.51	7.09	106.57	79.47	189.84	141.56
	062	12.00	196.6	93.54	353.6	90.99	343.9	89.14	336.9	9.88	7.37	114.17	85.13	196.34	146.41
	066	13.00	213.0	101.44	383.4	98.89	373.8	97.04	366.8	10.34	7.71	123.38	92.0	212.46	158.43
	072	13.86	227.1	108.00	408.2	105.45	398.6	103.60	391.6	10.72	7.99	131.04	97.71	225.86	166.42
	085 <sup>1)</sup>	16.40	268.7	127.79	483.0	126.13	476.7	--	--	11.88	8.85	101.66	75.80	--	--

1) 085 = 90 bar (1300 psi) max.int. & 085 = 2000 rpm max.  
Note: Product details are liable to change without any notice

VP  
DT



VT6DCCR-VT6EDCR



VT6DCCR-VT6EDCR